



JM INTERIORS
Fine hand crafted kitchens and bespoke furniture

Get in touch

01580 291 221
info@jminteriorsuk.uk
www.jminteriorsuk.uk

Showroom

Park Farm
Frittenden Road
Biddenden
Kent
TN27 8LG

Showroom Opening Hours

Monday - Friday 9.00am - 5.00pm
Saturday 9.30am - 1.00pm
(appointments recommended)

handcrafted furniture, beautifully made



Bread
Milk
Sugar





Welcome

We are an independent family business who have been crafting beautiful bespoke kitchens and interiors for over 30 years.


The growth of J M Interiors over the decades is due to our local reputation and the importance we place on delivering an exceptional product and level of service to our clients. We are an honest and professional company whose success is built on client referral and repeat business.

Our style is simple and understated, letting the quality of our materials and cabinet making speak for themselves.

We are passionate about design, style and practicality, we create spaces unique to your lifestyle and surroundings. Our furniture stays true to the original styling and proportions of the homes we work in meaning it is as at home in a country cottage as it is in a modern town house. Our aim is for our furniture to become part of someone's home and their everyday life.

We have compiled this recent collection of kitchen projects from many of the beautiful homes we have worked in.

We hope you enjoy looking through our portfolio of work and find inspiration in planning your project.



Our Ranges

Whilst our kitchens are unique and individual in nature to every client, we work within three broad design frameworks each with a different style and detailing.

We call these our ranges, all handmade by our craftspeople in our Biddenden workshop.



Shaker

Our bespoke shaker design is popular for its clean lines and sophistication whilst appearing beautifully understated. Its square shaped door blends a traditional style of furniture with a contemporary look.



Classic English

Representing the best in kitchen furniture materials and craftsmanship, it derives its origins from the simple proportions and details of the Georgian period. Classic framing and butt hinges gives it a look which is quintessentially English, solid and timeless.



Contemporary

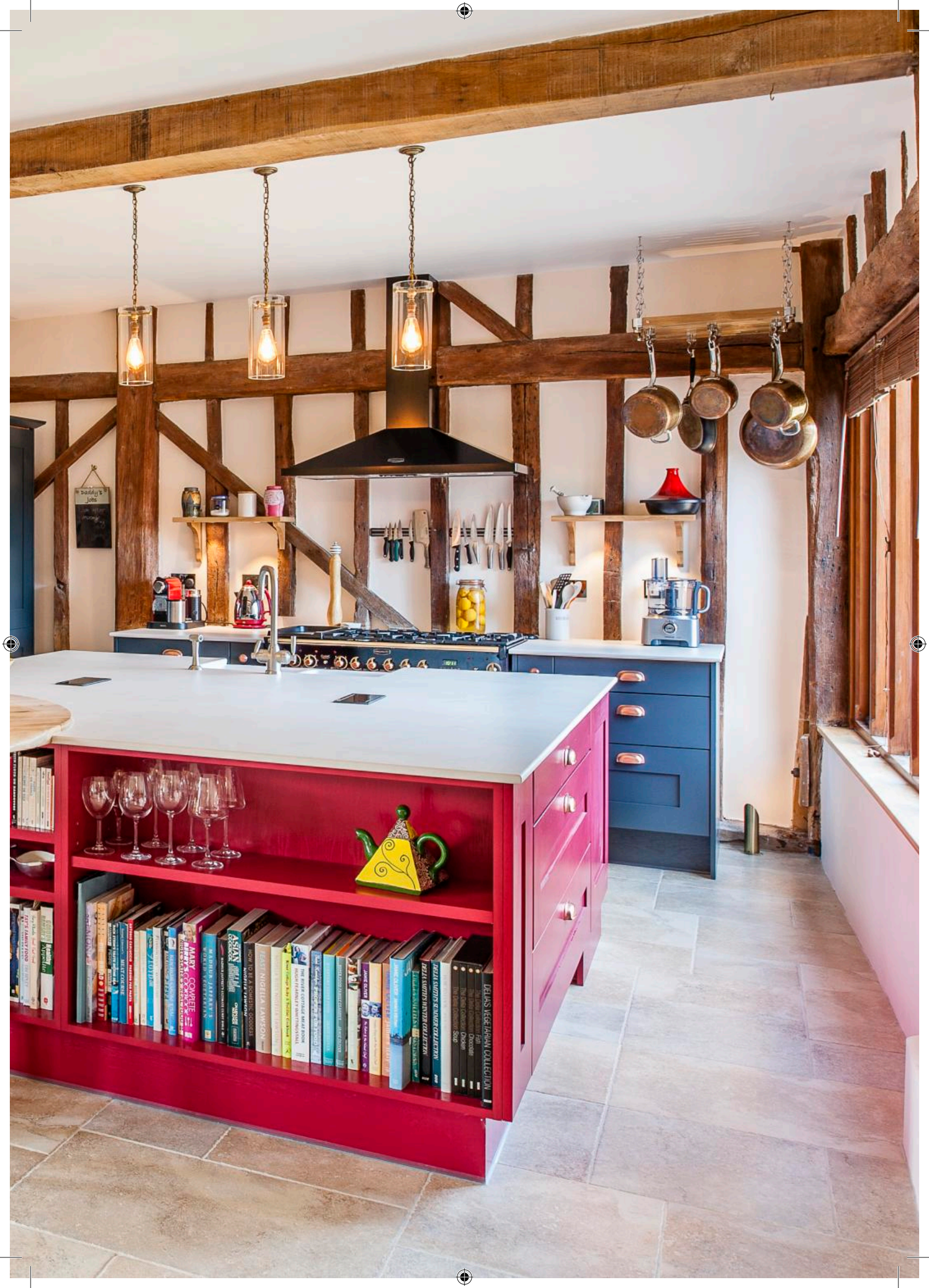
For those looking for something a little different, our contemporary range is defined by its linear look and minimal detailing. It has a modern feel that is sharp, open and uncluttered.



A selection of our very favourite Shaker kitchen projects











A stunning open plan family kitchen. Beautifully defined with original timber beams, it oozes character and personality. The large square multi functional island houses all the kitchens appliances, bins, wine rack & cooler, bookshelves and a perch area allowing the rest of the space to be left open. A separate boot room and pantry means everything has its place.









Black and white is a perfect partnership, reliably chic in every period of home. The monochrome look was a great choice for this large family kitchen, as it harmonises the different zones with an easy-on-the-eye, restful palette. The overall look is clean-cut, fresh and uplifting.



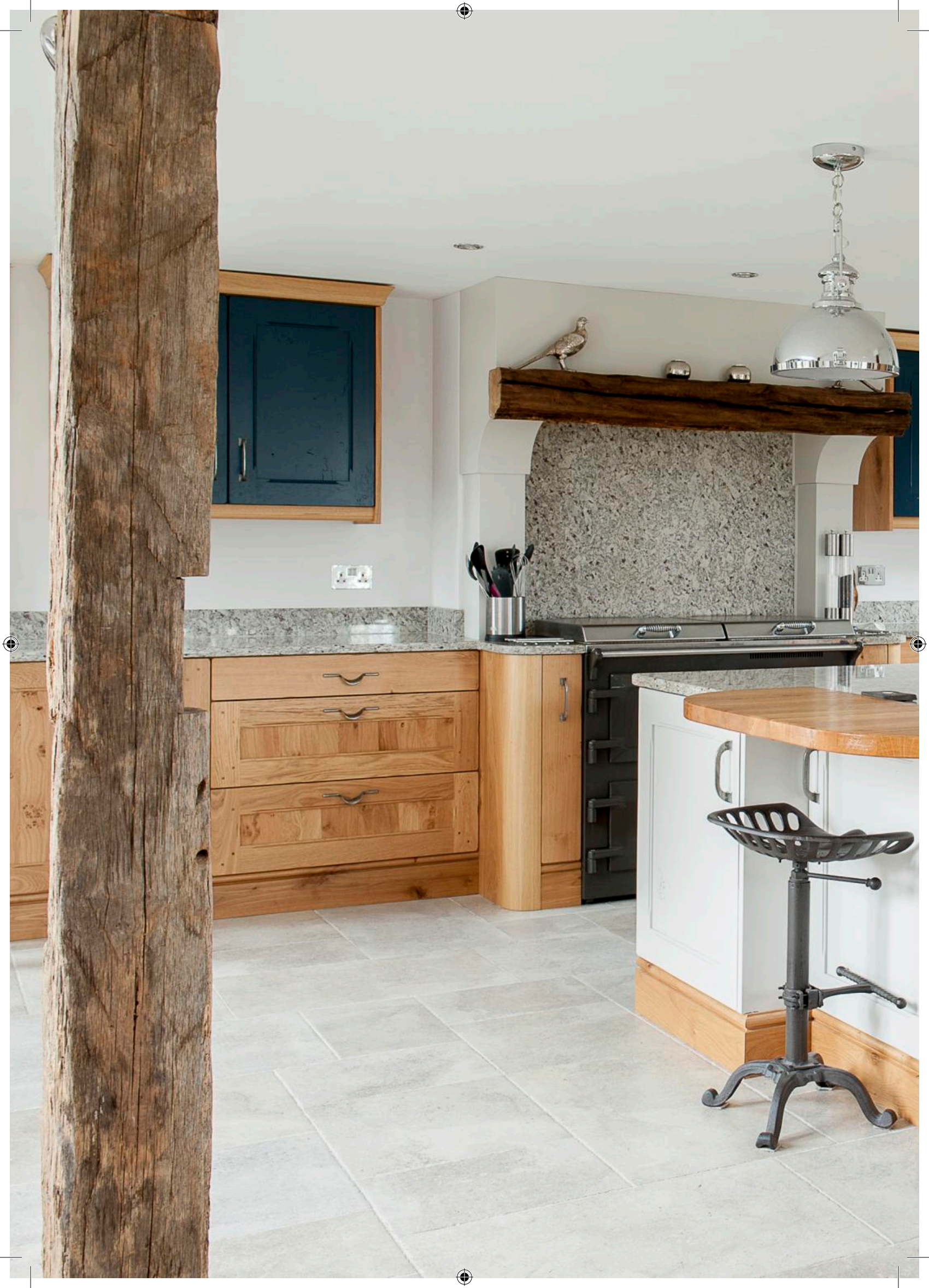






This pretty cottage kitchen is a great example of how to use a bold colour. Key statement pieces balanced with neutral cabinetry and sleek stone surfacing keep the colourful elements from overpowering the room allowing the rich crimson island to take centre stage.

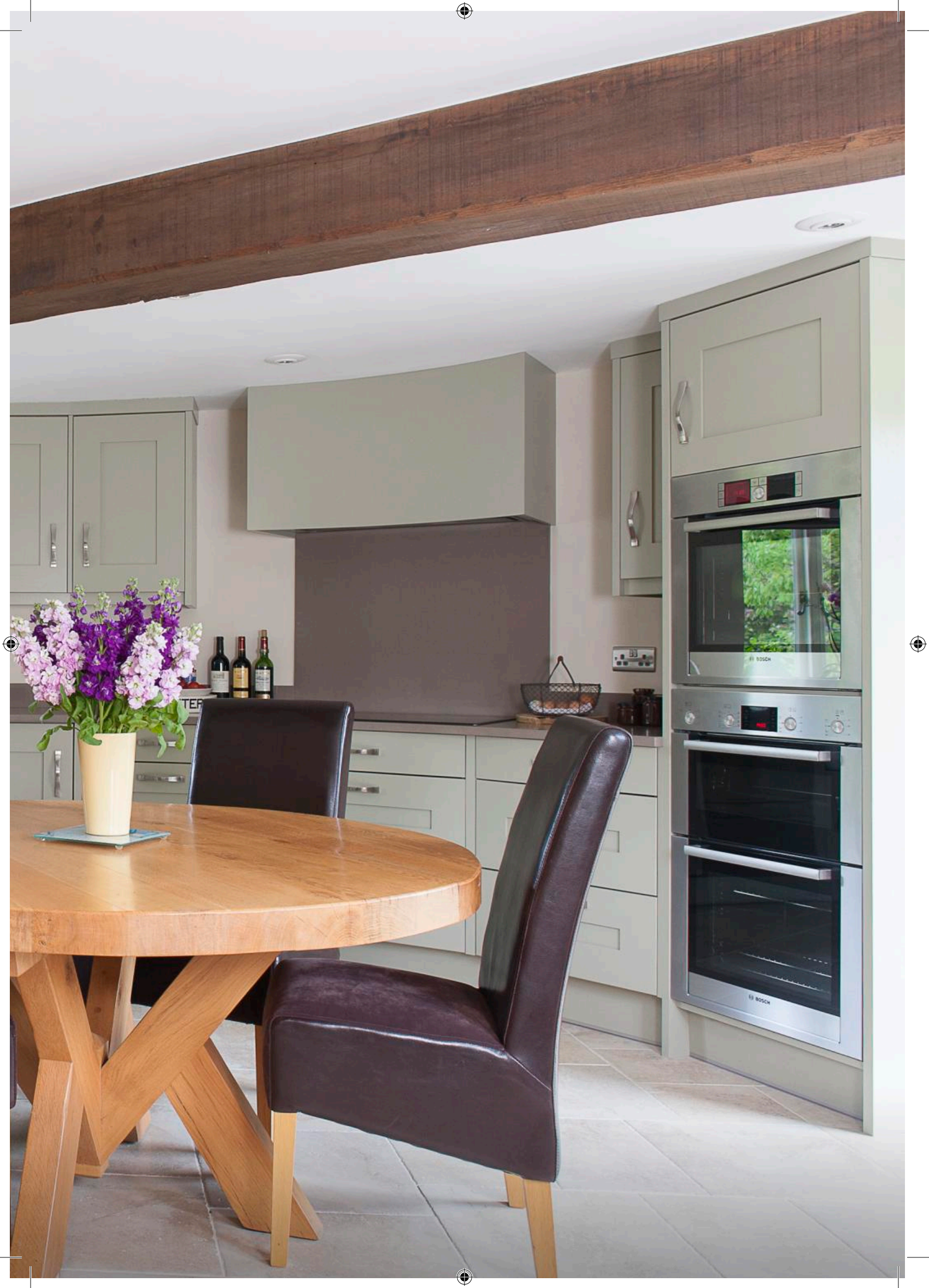








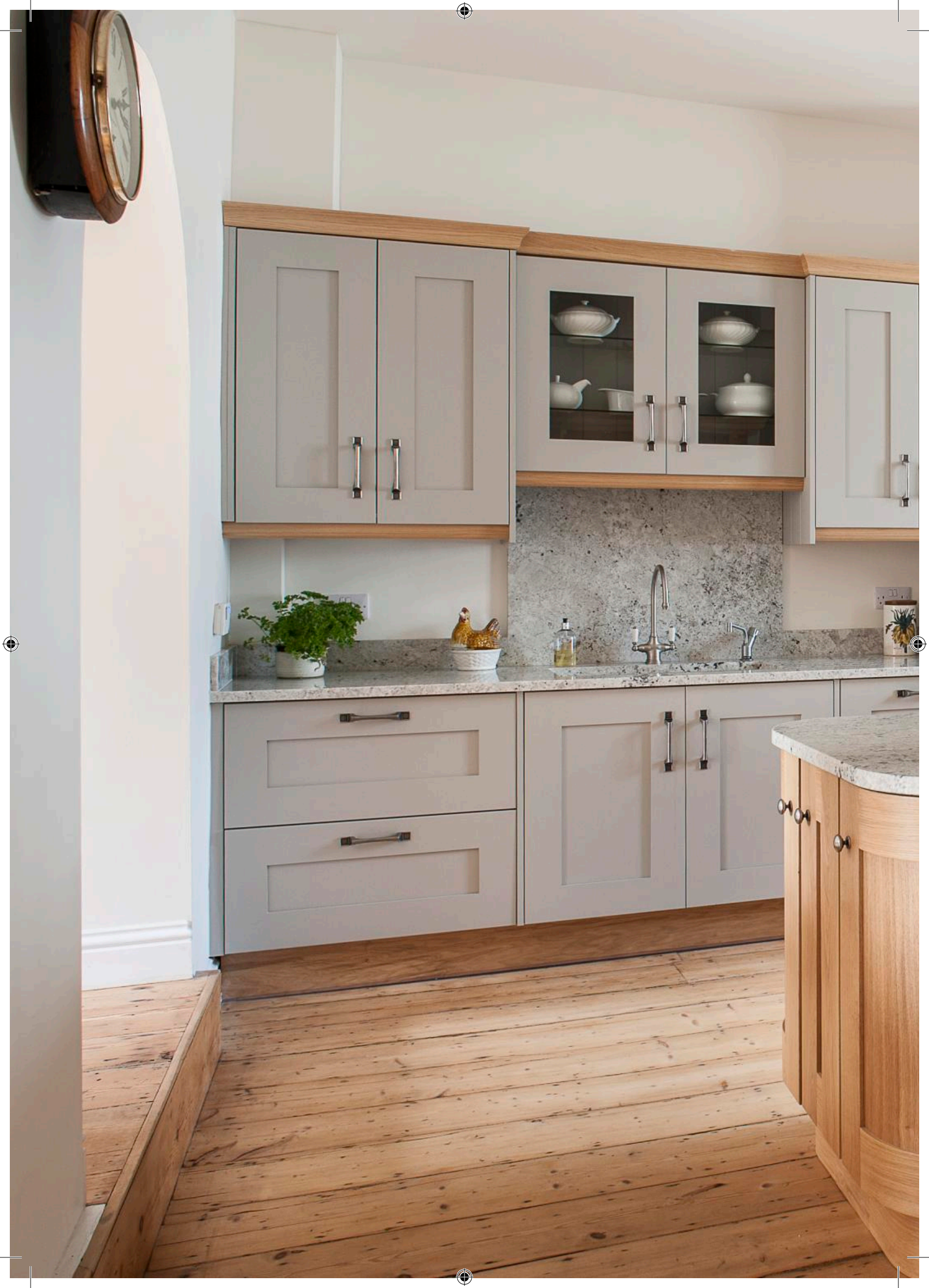
An example of how we work in rooms of all shapes and sizes. This Oast house roundel kitchen required complete precision in its design to enhance the natural curved shape but also to make full use of all the available space. The result is a wonderfully bright and welcoming kitchen.

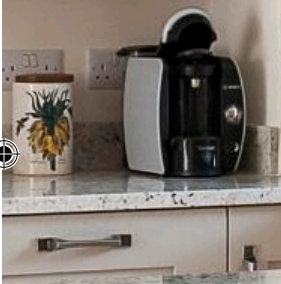






This kitchen is full of sunshine and charm; a picturesque renovated cottage that mixes neutral tones and natural woods with period features to create a contemporary and inviting space. The use of a statement blue colour on the compact island gives a very classy finish.









The family kitchen has it all; a big sunny room with lots of living and cooking space, great storage solutions and a lovely big island. The mix of greys and soft ambient light gives off a soothing calm.



Galley kitchens can be notoriously hard to make into a functional space. Keeping the colour light makes the room feel spacious and bright. Old buildings with low ceilings will have the same issues but with careful, simple choices and styling you can create a beautiful home.





A selection of our very favourite Classic English kitchen projects











This lovingly crafted kitchen has it all - space, attention to detail and timeless style. Everything works beautifully in harmony with nothing being left in its bespoke detailing for each element of the kitchen; from the walk - in pantry to tailor made spice racks, hidden coffee station and customised plate racks through to the impressive submerged wine cellar.









This beautiful blue kitchen shows how metallics can bring a wonderful new dimension to your design. It's all in the finer details, adding subtle touches of shiny copper via the handles, lighting, bar stools and accessories to really bring the room alive. The overall look is modern and very stylish.







This laid back English country kitchen is effortlessly styled with a very contemporary and open feel.

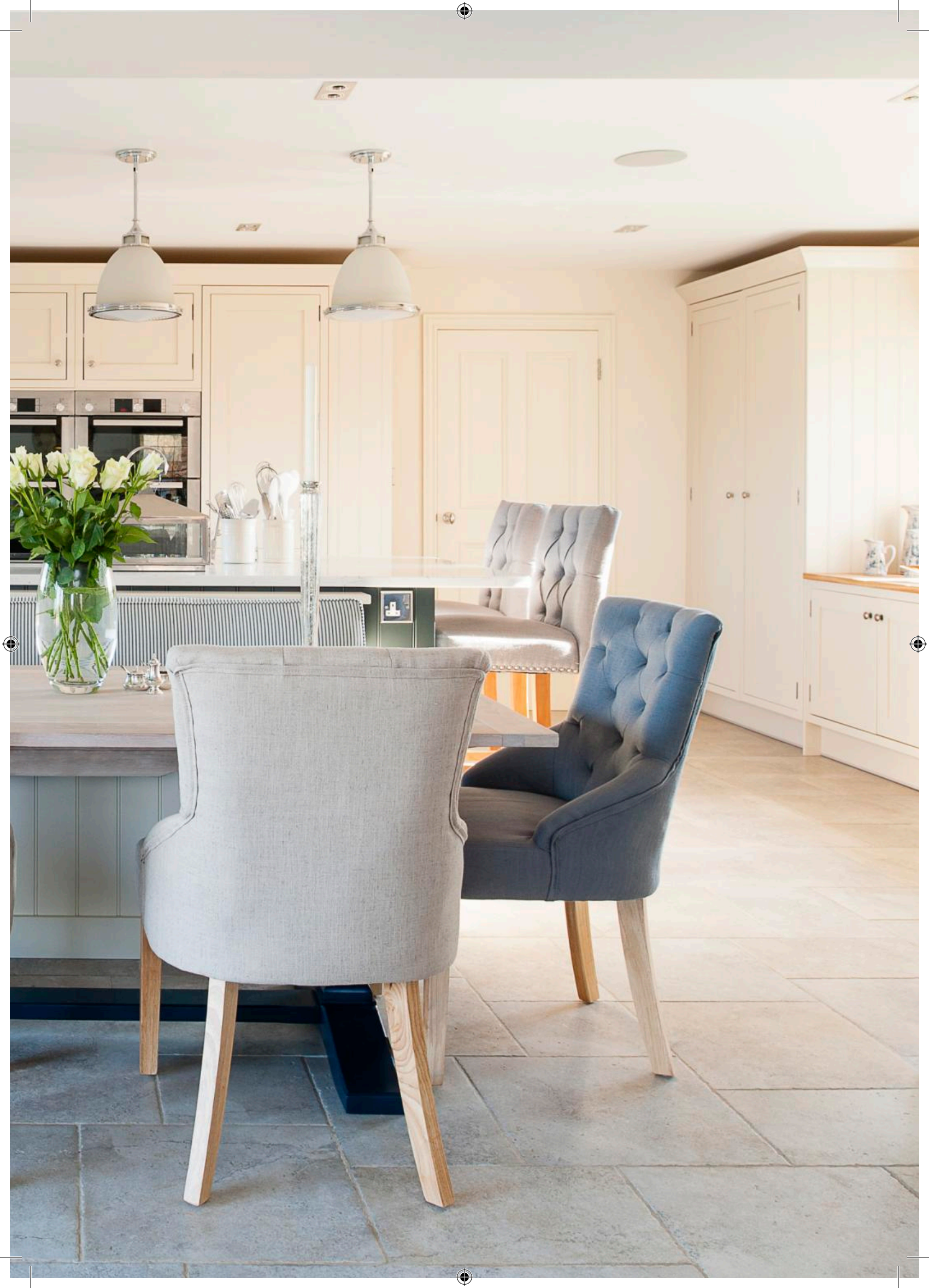




A chocolate box that cottage full of unique charm. With low ceilings and small windows this kitchen needed clever cabinetry design with reduced depths & hidden storage along with the right colour combinations to create a light and airy feeling of space.











An entertainer's dream; this kitchen exudes a relaxed elegance that blends both style and practicality. The feature island and fabulous seating area give a focal heart to a wonderfully warm, social space.





The original chimney of this former bakery creates a stunning focal point for this beautifully light and spacious kitchen.

An introduction to our Contemporary style kitchen range









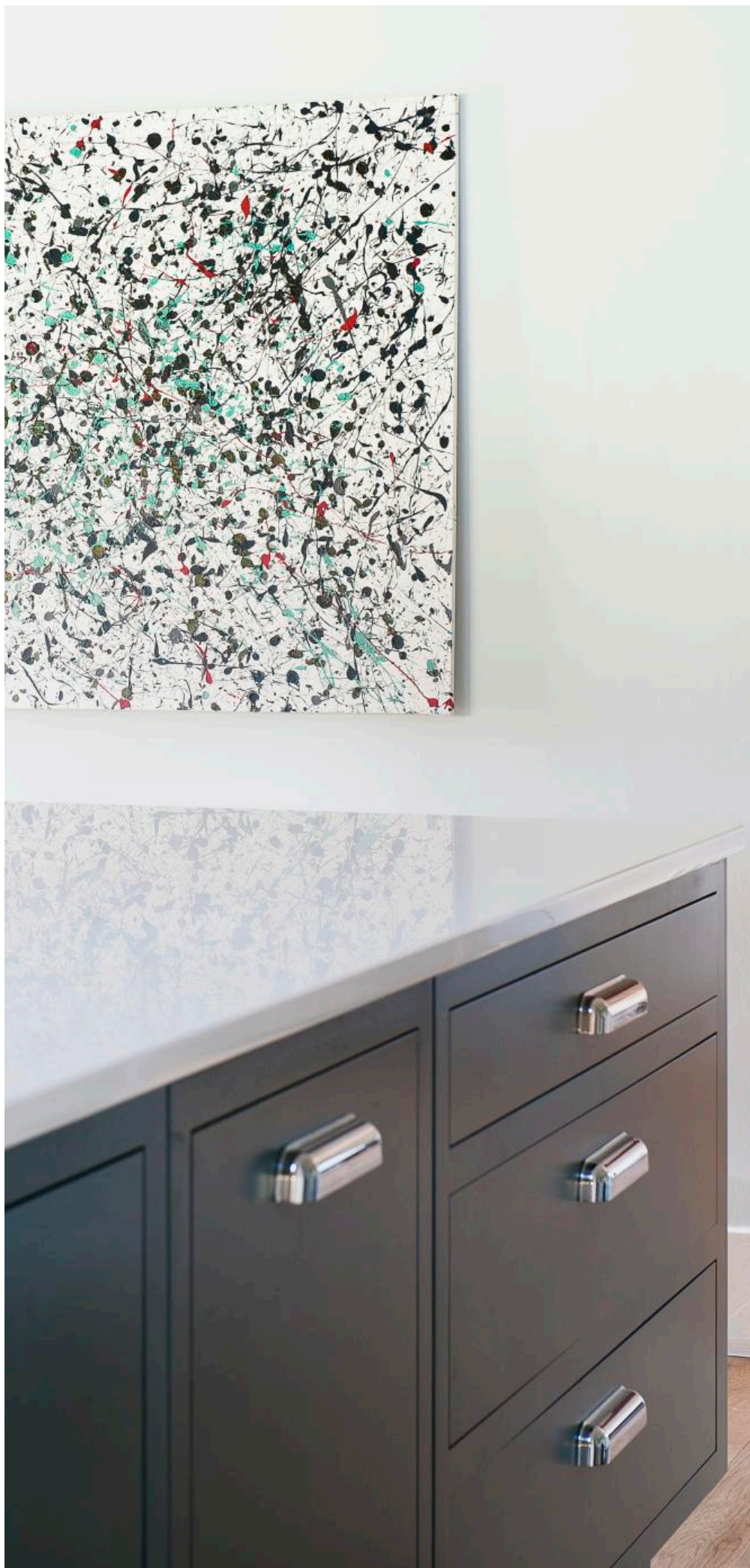
The Contemporary space in our showroom showcases the simplicity of the cabinetry. The sleek Dekton work surfaces with stainless steel appliances and handles give it a look that is quite industrial whilst the white metro tiles add a clean, crispness. The bank of deep pan drawers provide so much storage but mean the kitchen is understated and wonderfully proportioned.







Set in a beautiful barn, this light flooded family kitchen is pulled together by simple, elegant cabinets, soft colour tones and chic touches of industrial style. The island is the workhorse of the kitchen, in a contrasting colour it anchors the design and grounds the space.









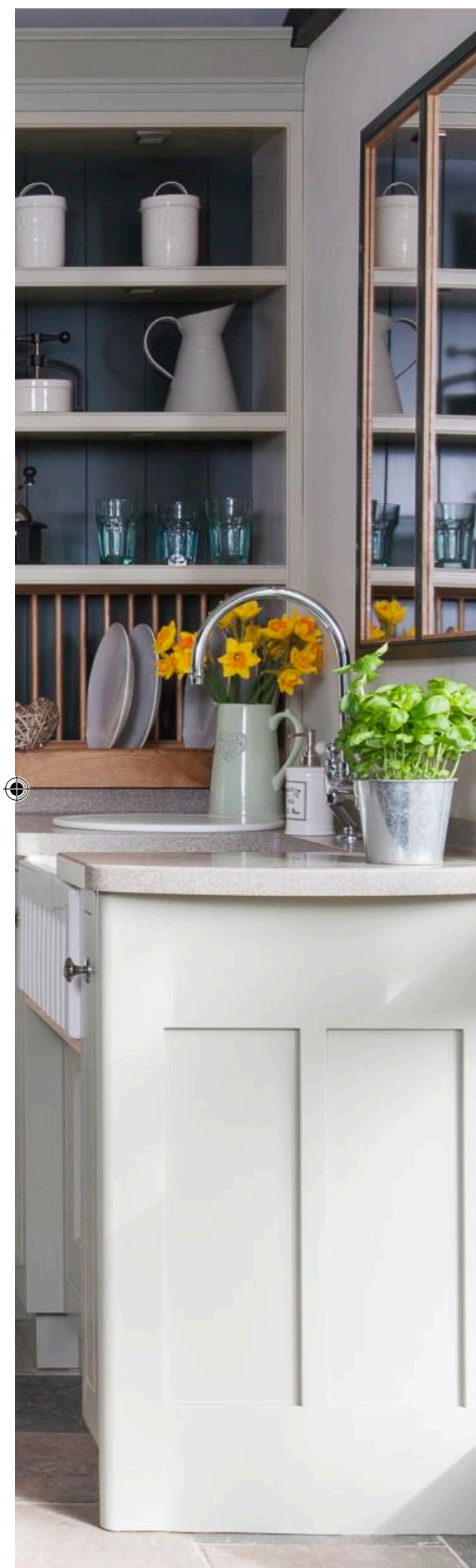
With blues and greys remaining firm kitchen colour favourites, we're seeing some competition from 'greenery'. This lovely country house kitchen shows you how the elegant tones of a deep green are a perfect choice for balancing tradition with some dramatic impact for a more contemporary space.











Our showroom, workshop and design service

J M Interiors converted an old chicken shed in the heart of the Kent countryside into our showroom and workshop. It houses lots of examples of our bespoke furniture, products and accessories along with our kitchen designers, project team and highly skilled craftspeople. Patch the dog always gives a very warm welcome to our visitors.



JMINTERIORS

Fine hand crafted kitchens and bespoke furniture

www.jminteriorsuk.uk